

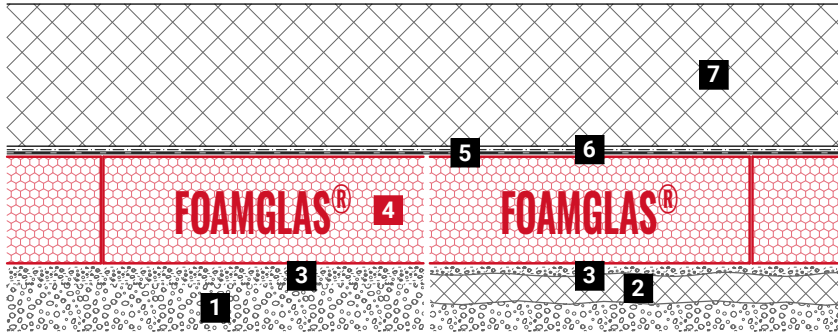
## Floor insulation (load-bearing) with waterproofing on lean concrete mix or levelling compound

FOAMGLAS® for dry construction



### Schematic drawing

System 1.1.2



1. Subsoil or compacted hardcore
2. Lean concrete mix
3. Levelling compound of chippings, stabilized sand or liquid mortar
4. FOAMGLAS® loosely laid
5. Bituminous waterproofing
6. Separating layer
7. Concrete slab

### FOAMGLAS® product properties

Waterproof – Resistant to vermin – High compressive strength – Non-combustible – Impervious to water vapour – Dimensionally stable – Acid resistant – Easily cut to shape – Ecological

### Advantages of the FOAMGLAS® system

- **Quality** : Systems with high quality materials. Quality management by systematic site inspections and professional consulting.
- **Cost efficiency** : The high durability preserves maximum value and guarantees minimal maintenance costs.
- **Sustainability** : Optimum insulation and protection against moisture for generations.
- **Safety** : Provides a substructure with high compressive strength and without deformation for safe structure of the building.
- **Functionality** : Providing insulation and capillary barrier in one single functional layer.

### Recommendations for architect

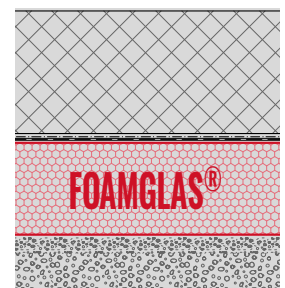
Typical Setup:

**FOAMGLAS® BOARD T4+, S3, F (120 x 60 cm).**

- Insulation thickness to meet building regulations or the project-specific U-value requirements. Please also consult our product overview. It contains information on all our products, their field of application and their specific properties.
- The flatness and the general conditions of the substrate are important criteria when using FOAMGLAS® (see TG1). Please contact our Technical Department to verify the criteria for the substrate.
- For technically correct implementation, relevant standards and guidelines must be observed.
- Constructions on sites with a high groundwater table or high water pressure require specialist advice. Please contact our technical staff.

Solutions for technical details and specification clauses on request. Further proposals and solutions are available any time from our technical consultants. Updated: **24/06/2021**.

We explicitly reserve the right to change the technical specifications. The current values can be found on our website under: [www.foamglas.com](http://www.foamglas.com)



## Floor insulation (load-bearing) with waterproofing on lean concrete mix or levelling compound

FOAMGLAS® for dry construction



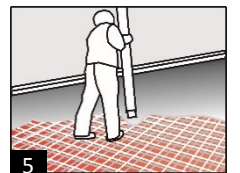
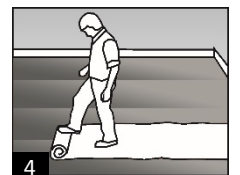
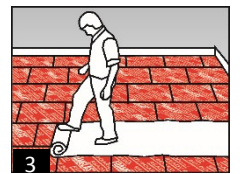
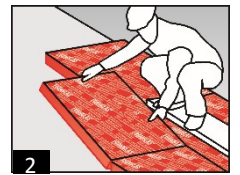
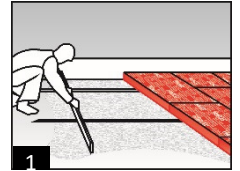
### System 1.1.2

#### Installation instructions

- Prepare subbase in accordance with the site engineer's instructions. Pour lean concrete mix, thickness ~ 50 mm. Apply a thin layer of fine chippings, dry sand or liquid mortar, grading 3 / 6, in order to level off any irregularities. Level off the surface. (1)
- Apply FOAMGLAS® with staggered and tight-butted joints. (2)
- Torch applied bituminous waterproofing membrane (one or two layers dependent on the degree of humidity and on relevant standards). (3)
- Apply two separating layers, joints overlapping. (4)
- To protect against high mechanical load or heavy site traffic, apply a protective layer of lean concrete mix, thickness ~ 50 mm.
- Apply the reinforced concrete floor slab. Dimensioning according to the instructions of the structural engineer. (5)

#### Recommendations for the contractor

- The build-up and tolerances of the substrate must be in accordance with relevant standards and guidelines.
- Substrate and ambient temperature should not be below + 5° C.
- At the end of each day and on completion, a top coat must be applied immediately after the insulation has been installed.
- Adequate measures should be taken in order to avoid any risks of damage by other contractors during construction.
- Please contact our technical consultants; they can help you by providing support or on-site assistance free of charge.



The technical guidelines for the application and the installation of FOAMGLAS® are based on historical experience and general site practice. They do not reflect individual examples. We therefore assume no liability as to the completeness and the suitability for a specific project. Furthermore, our liability and responsibility are subject to our general conditions of sale which are not extended either by this technical data sheet nor by the consulting of our technical sales representatives.

Pittsburgh Corning  
Europe S.A. / N.V.  
FOAMGLAS® Distributors  
Albertkade 1  
B-3980 Tessenderlo  
Belgium